

ELITE IPM

(Interconnectivity Protocol Module)

INSTALLATION GUIDE



IPM is an add-on product to ELITE that outputs flight data in formats (or protocols) common to most handheld GPS or Electronic Flight Bag (EFB) devices used for actual aircraft navigation. Connecting your devices to ELITE offers a new dimension in training and flight simulation.

ELITE[®]
ELITE SIMULATION SOLUTIONS

SUPPLEMENTS

REQUIREMENTS

ELITE software with Interconnectivity Protocol Module (IPM) Garmin Handheld GPS, Serial GPS Cable, available Serial Port or USB Port with Serial to USB Adapter.



ELITE with IPM
(Already installed with your RC-1)



Garmin Handheld GPS
(GPSMAP® 496 Shown)



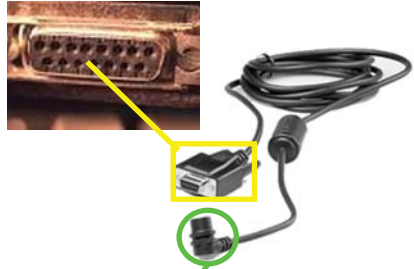
Serial GPS Cable
(A USB cable will not work UNLESS you have a USB Serial adapter.)



Enabled Serial COM Port

ATTACHING YOUR DEVICE

Step 1: Attach the serial GPS cable to an available serial port on your PC.



Step 2: Attach the 4-plug portion of the serial GPS cable to the back of the Garmin Handheld GPS.



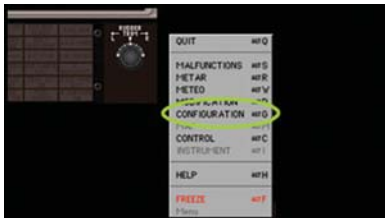
(GPSMAP® 496Shown)

SUPPLEMENTS

CONFIGURATION

Setting Up Your Software

Step 3: Select the Configuration Screen on Main Menu or by the keyboard shortcut (entering **<ALT> + G** simultaneously).

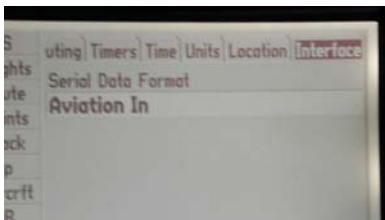


Step 4: Select GPS Out Configuration **SET**.



Step 5: Select the correct COM port/speed protocol. For most Garmin products choose **AV400** for GPS Out Protocol and Baud Rate at **9600**.

Step 6: Change Interface mode to "Aviation In."



Start Simulator Mode

You can start simulator mode by using the GPS tab or the setup tab on the main menu.

To start Simulator Mode using the GPS tab:

1. Press **MENU** twice to show the Main Menu.
2. Highlight **GPS** from the vertical menu.
3. Press **MENU** to open the GPS tab option menu.
4. Highlight Start Simulator, and Press **ENTER**.



SUPPLEMENTS

To start Simulator Mode using the Setup tab:

1. Press **MENU** twice to show the Main Menu.
2. Highlight **SETUP** from the vertical menu.
3. Highlight the **SYSTEM** sub tab.
4. Select **SIMULATOR** from the System Mode field



Setup tab of Main Menu

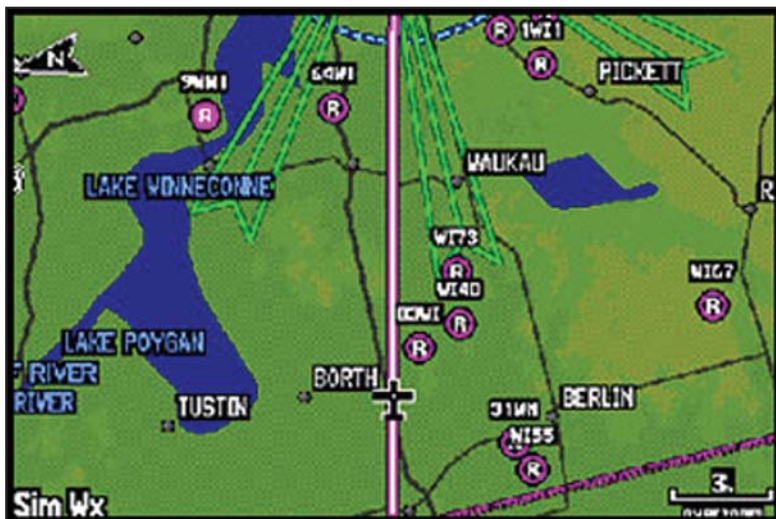
System sub tab



NOTE: Do not attempt to navigate using simulator mode, when the unit is set to simulator mode, the GPS receiver is turned off. Any satellite signal strength bars shown are only simulations and do not represent the strength of actual satellite signals.

INSTALLATION COMPLETE

With the correct parameters set in ELITE Configuration and your GPS, the position of the aircraft in ELITE and GPS map page should be the same. If ELITE and your GPS is not in location and position synch, revisit all settings.



Intentionally
Left
Blank